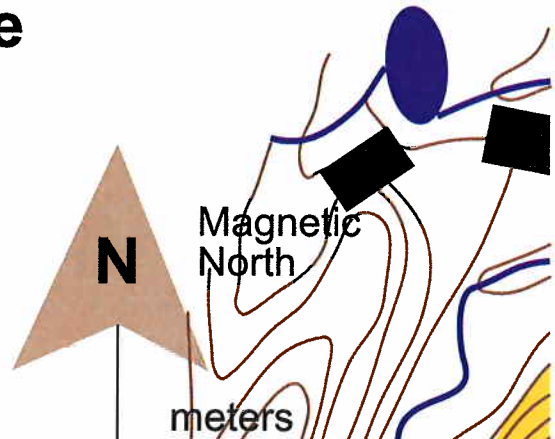
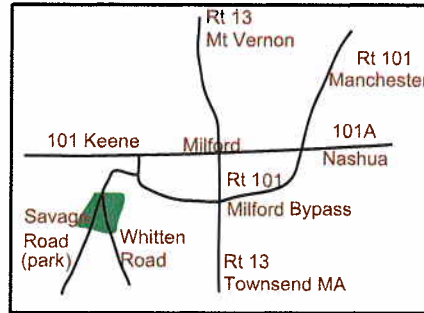


# Tucker Brook Town Forest

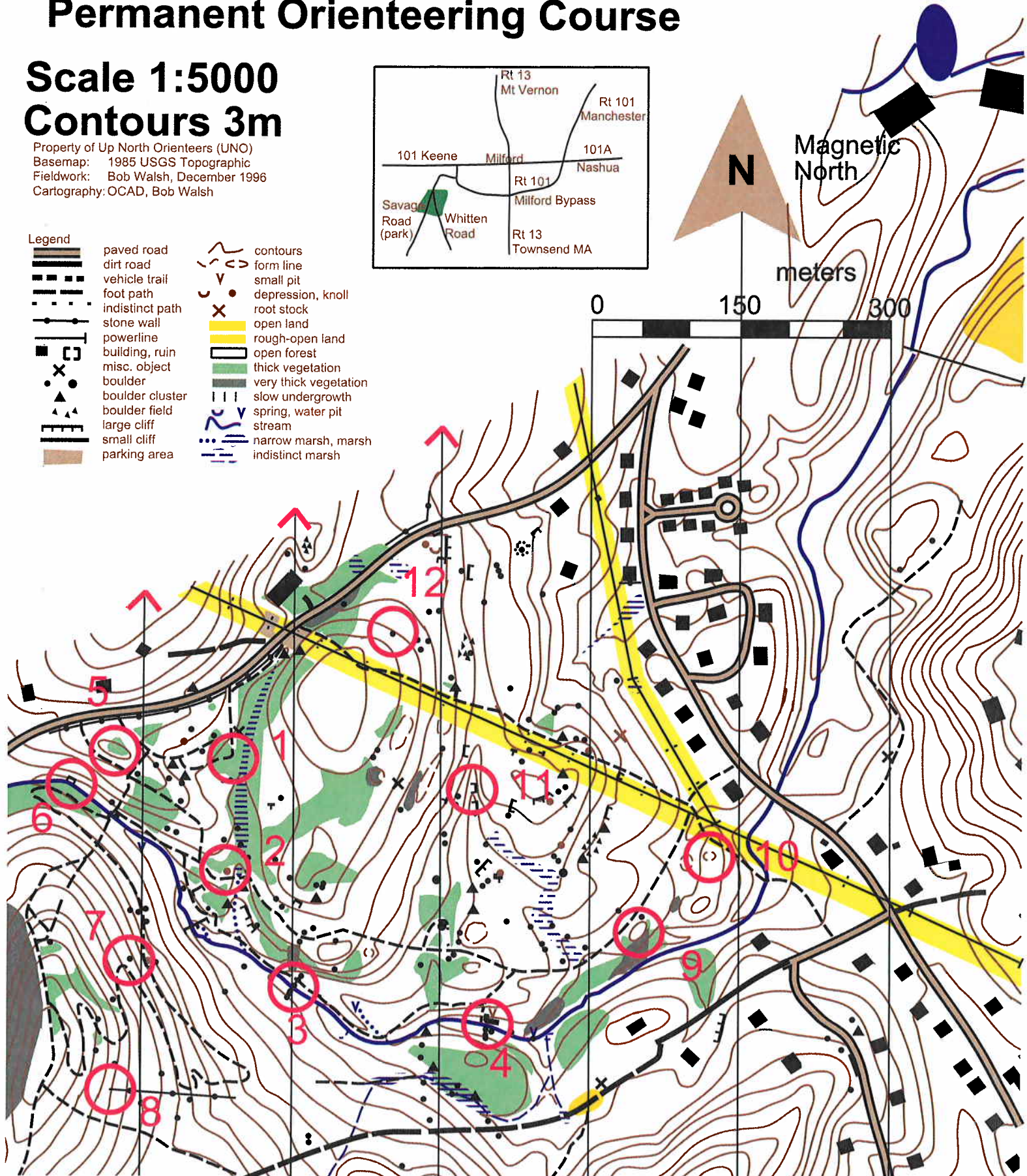
## Milford Conservation Commission Permanent Orienteering Course

**Scale 1:5000**  
**Contours 3m**

Property of Up North Orienteers (UNO)  
Basemap: 1985 USGS Topographic  
Fieldwork: Bob Walsh, December 1996  
Cartography: OCAD, Bob Walsh



Legend			
	paved road		contours
	dirt road		form line
	vehicle trail		small pit
	foot path		depression, knoll
	indistinct path		root stock
	stone wall		open land
	powerline		rough-open land
	building, ruin		open forest
	misc. object		thick vegetation
	boulder		very thick vegetation
	boulder cluster		slow undergrowth
	boulder field		spring, water pit
	large cliff		stream
	small cliff		narrow marsh, marsh
	parking area		indistinct marsh



## Tucker Brook Town Forest - Permanent Orienteering Course

### Instructions

Located in the forest are 12 orange and white 4x4 inch markers which are attached to trees. The location of these markers is indicated by red circles shown on the orienteering map (available free at the Milford Town Hall and via download from the Conservation Commission's Web site, <http://www.milford.nh.gov/~conservation/>). In the middle of the circle is a feature such as a boulder, cliff, knoll, etc. The legend on the map helps in identifying these features. Each marker is located near these features. The features are:

Marker #	Feature	Marker #	Feature
1	Bend in trail	7	South side of boulder
2	Knoll (small hill)	8	West end of stonewall
3	Stonewall/stream intersection	9	Top of hill
4	Top of cliff	10	Top of hill
5	Top of hill	11	Bottom of cliff in small valley
6	Bottom of cliff	12	Boulder

When you find the marker, note the number on it and find the corresponding letters in the key below. Write these letters in the answer boxes below based on the marker number. For example, if marker number 5 had the number 100 written on it then write HEW (look at the key) in box 5 below. When you have found all the markers and written in all the letters you will see an expression appear as you read across the boxes. If you solve the expression, email the answer to the conservation commission and you will be given credit for the find on the web site. The commission's email address is: [conservation@milford.nh.gov](mailto:conservation@milford.nh.gov)

### KEY:

100	HEW	104	ASO	108	EXC	112	ILD	116	ARE
101	ORD	105	TOM	109	LOR	113	TAN	117	RDN
102	EAN	106	EXP	110	ANDS	114	JOYT	118	DEN
103	AS	107	ILF	111	FM	115	CTO	119	MIL

Parking is available on the EAST side of Savage Road underneath the powerlines. Although the woods are relatively safe, there are inherent dangers which could cause injury. Slips, trips, falls, insect bites, branch scraps, etc are all very possible in the woods. Pay attention to where you step and to what is in front of you to avoid injury. Hike with a partner whenever possible. If you do get lost, hike in an easterly, northerly or westerly direction which will bring you to either Savage or Whitten Road.

### Puzzle Answer:

1	2	3	4	5	6	7	8	9	10	11	12
---	---	---	---	---	---	---	---	---	----	----	----