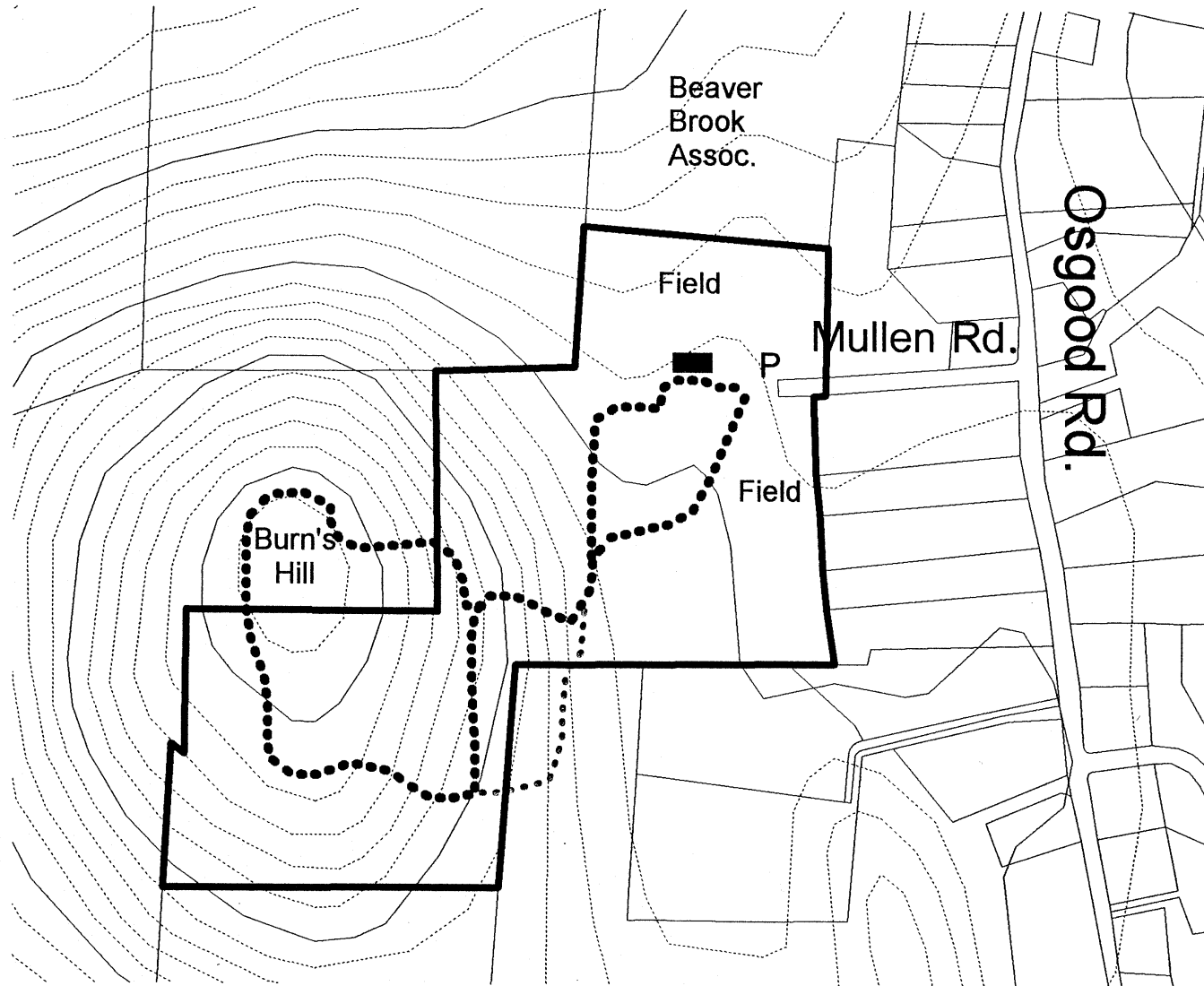


# Hitchiner Town Forest

This 194 acre property was once farm land as evidenced by the many stone walls. The highlight of the walk is Burn's Hill at an elevation of 751 feet.



20 foot contours  
20 foot interval  
100 foot index interval

Hitchiner Trails  
Public Trails  
Private cart road  
Pavillion  
P Parking

Property is managed by the Milford Conservation Commission.  
Contact us at:  
[conservation@milford.nh.gov](mailto:conservation@milford.nh.gov)

0.2 0 0.2 0.4 Miles

